

Document

5100 Signaling Devices Product Index

Product Index

This catalog section represents an visual overview of signaling light products including:

- Status Indicators
- Rotating Lights
- Flashing & Steady-Burning Lights
- Strobe Lights
- Hazardous Location
- Explosion Proof
- Audible / Visual



See the products brief description and get more specific information from the documents indicated.

Use the Voltage Quick Reference Selection [Document No. 5102](#)

Document

5132 UniStat™ Status Indicator

USI

Multicolor L.E.D. NEMA 4X Status Indicator

- Tri-color or quad-color
- 100,000 hour, vibration-resistant L.E.D. light source
- Available in 24VAC/DC or 120VAC
- PLC compatible
- UL Listed, CSA Certified, CE Compliant (24VAC/VDC)
- NEMA 4X, IP65 enclosure
- Surface mount and integrated 3/4" pipe mount



The UniStat™ is an L.E.D. (light emitting diode) based, multi-color, single-high status indicator. The UniStat™ tri-colored unit produces amber, green and red from a single L.E.D. array, while the quad-colored unit generates amber, blue, green and red. The UniStat™ is water tight and dust tight. This unique visual signal is available in 24VDC and 120VAC, and the base of each light can be pipe or surface mounted.

5103 Microstat™ Status Indicator

MSL

Compact Status Indicator in Water-Tight Enclosure

- Available in 24VAC/DC or 120/240VAC
- Factory assembled
- Vibration-resistant 5.6W wedge lamp
- UL Listed, CSA Certified, CE Compliant (24VAC/VDC)
- NEMA 4X, IP65 enclosure
- Small footprint – only 2.2" dia. (55.9 mm)
- Surface mount and integrated 3/4" pipe mount

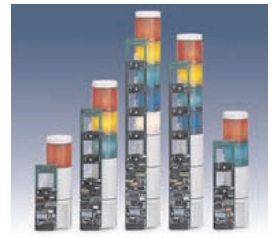


The MicroStat™ is a compact, NEMA 4X status indicator. Ideal for OEM applications, the MicroStat comes preassembled as 1-, 2-, 3-, 4-, or 5-high light units. The user selects combinations from five colors (amber, blue, clear, green and red). „O-rings“ between each segment provide a water-tight and dust-tight seal. The MicroStat is available in three voltages (24VAC/DC, 120VAC and 240VAC) and the base of each light can be surface or pipe mounted (3/4-inch NPT).

5133 DeviceNet® Microstat™ Status Indicator

MSL-DVN DeviceNet® Compatible Status Indicator in Water-Tight Enclosure

- Available in 24VDC
- Self-contained circuits
- Addressable
- "Lamp-out" supervision
- Three flash rate selections via buss
- 5-watt wedge lamp
- Five lens colors
- Open Device Vendor Association (ODVA) Approved
- UL Listed, cUL Listed, CSA Certified, CE Compliant



MicroStat™ is now a DeviceNet®-compatible status indicator in a compact, NEMA 4X package. Ideal for OEM applications, the MicroStat is pre-assembled in heights of 1-, 2-, 3-, 4-, or 5-high. The user selects a combination of colors (amber, blue, clear, green and red). The base of each light can be surface or pipe mounted (3/4-inch NPT).

5134 MicroStat Status Indicator Optional Equipment

MSLBRCKT, MSLED, MSP, MSS, MSTB

Add These Options to Your MicroStat™

- Wall mount bracket
- Plug-in LED's in six colors – amber, blue, clear, green, red or superbright green
- Pipe extensions
- Plug-in sound module
- Tulip-style pipe-mount base
- UL Listed and CSA Certified (MSLED, MSS)



A variety of optional equipment is available for the MicroStat™.

5104 Litestak™ Status Indicator

LSB, LSBS, LSL

Notify Status Changes with Color and Sound

- Available in 24VDC, 120VAC and 240VAC
- Five lens colors
- Surface mount and integrated 3/4" pipe mount
- UL Listed, cUL Listed, CSA Certified for indoor use
- NEMA 1, IP41 enclosure



Litestak™ status indicator is a column of signal lights that indicate the status of a process or machine. The units may include up to five Light Modules (Model LSL) available in amber, blue, clear, green and red; or four light modules plus an optional Sound Module (Models LSS or LSH) to create a dual purpose audible / visual status indicator. The Sound Module always occupies the top position of a Litestak unit.

5105 Litestak™ LED Light Module

LSLD

Long Life Light Source

- Available in 24VDC and 120VAC
- Five lens colors
- 100,000 hour, vibration-resistant L.E.D. lamp
- Surface mount and integrated 3/4" pipe mount
- UL Listed, cUL Listed, CSA Certified for indoor use
- NEMA 1, IP41 enclosure



Litestak™ status indicators are a vertical column of lights that indicate the status of a machine's operating process in a full 360° radius.

5106 Litestak™ Sound Module

LSS

Add Sound to Your Litestak™

- Modular unit fits on top of any Litestak™ configuration
- Select one of 18 tones
- Available in 24VDC and 120VAC
- Capable of outputs between 59-69dB @ 10' (69-79dB @ 1m)
- UL Listed, CSA Certified for indoor use
- NEMA 1, IP20 enclosure



The Litestak™ Sound Module is a microprocessor-based audible signaling device. The model LSS can be used as a stand-alone audible signal device or combined with the Litestak™ light modules to create an audible / visual signal.

Document

5107 Litestak™ Piezoelectric Horn Sound Module

LSH

A Single-Tone Horn for Litestak™ Status Indicators

- Adjustable volume
- Available in 24VDC, 120VAC & 240VAC
- NEMA 1, IP20 enclosure
- UL Listed, CSA Certified for indoor use
- Capable of producing 77dB @ 10' (87dB @ 1m)



The Litestak™ LSH Horn is a piezoelectric unit that employs a ceramic element which expands or bends when voltage is applied, generating a single tone. The Model LSH can be used as a stand-alone audible device (with the LSB pipe / surface mount base or LSBS surface mount base), or combined with the Litestak™ light modules to create a combination audible / visual signal.

5136 Vitalite® Rotating Warning Light

121

Light Duty Vehicular Light

- Available in 12VDC
- Five dome colors
- Magnetic mount
- NEMA 3R, IP45 enclosure



The Vitalite® Model 121 is a compact 12VDC rotating light, ideal for vehicular applications. It features a parabolic reflector which rotates around an incandescent lamp, providing 60 flashes per minute in all directions. The 121 is available in five dome colors – amber, blue, clear, green and red.

5109 Vitalite® Rotating Warning Light

121S

Light Duty Warning Light

- Available in 120VAC
- Five dome colors
- Integrated ½-inch pipe mount
- UL Listed, CSA Certified
- NEMA 3R, IP41 enclosure



The Vitalite® Model 121S is a compact, rotating warning light designed for in-plant use. It features a parabolic reflector which rotates around an incandescent lamp, providing 60 flashes per minute in all directions. The 121S Vitalite® is available in five dome colors (amber, blue, clear, green and red). It is UL (Underwriters Laboratories) Listed and CSA (Canadian Standards Association) Certified.

Vehicular Rotating Light

100

Highly Visible Mobile Warning Light

- Available in 12VDC
- Four dome colors
- 200-hour, 50W halogen lamp
- Surface mount
- NEMA 3R, IP45 enclosure

Discontinued



The Model 100 is an economical and powerful rotating light. It is designed for use on medium duty work and emergency vehicles in industrial environments. This 12VDC light features a single halogen lamp and a rotating parabolic reflector enclosed in a sturdy polycarbonate dome. Dome color choices include amber, blue, clear and red.

5111 Commander® Rotating Warning Light

371 / 371L

Heavy Duty Warning Lights

- Available in 120VAC
- Five dome colors
- Surface mount and integrated 1-inch pipe mount
- UL Listed, cUL Listed, CSA Certified
- NEMA 4X, IP66 enclosure



The Commander® Models 371/371L incandescent warning lights have a powerful sealed beam lamp that rotates 360° within a glass or polycarbonate dome. Power is delivered to the Commander's rotating lamp by a unique collector ring. The lamp itself is mounted in a pivoting yoke. This allows the lamp beam angle to be adjusted through 90 degrees from horizontal to vertical. Changing the beam angle allows the user to create unique light patterns and/or direct the light for better visibility.

Document

5135 FireBeam® Compact Vehicular Warning Light

FB3SM

Our Brightest Vehicular Warning Light!

- Available in 12VDC
- 68,000 candela output
- 55-watt Halogen lamp
- Dual Speed Motor for 95 or 175 FPM
- Four dome colors
- Low profile – only 3.8" (96.5mm) high



FireBeam® is a super-bright, compact vehicular warning light. This rotating 55-watt halogen light produces 68,000 candelas per flash. Each lightweight unit features a polycarbonate base and snap-on dome. The light is easily and quickly serviced without the use of tools.

5137 Vitalite® Rotating Warning Light

121A

Light Duty Vehicular Light

- Available in 12VDC and 24VDC
- Five dome colors
- Surface mount
- NEMA 3R, IP45 enclosure



The Vitalite® Model 121A is a compact, rotating light designed for vehicular applications. It features a parabolic reflector that rotates around an incandescent lamp, providing 60 flashes per minute in all directions. The 121A is available in five dome colors – amber, blue, clear, green and red.

5108 Electraray® Rotating Warning Light

225

Economical Light Duty Warning Light

- Available in 120VAC
- Five dome colors
- Integrated ½-inch pipe mount
- UL Listed, CSA Certified for indoor/outdoor use
- NEMA 4X, IP65 enclosure



The Electraray® Model 225 is a compact, economical rotating warning light designed for industrial uses. This innovative dome design features a single retaining screw that allows quick and easy access for inspection and relamping.

5110 Pioneer™ Rotating Beacon Ray

27S

Medium Duty Warning Light

- Available in 120VAC
- Six lens colors
- 2,000 hour sealed beam lamp
- Integrated ½-inch pipe mount
- UL Listed, CSA Certified
- NEMA 3R, IP45 enclosure



The Pioneer™ Model 27S is a medium sized, highly effective warning light designed for upright mounting and AC operation. This rotating light is available in six colors (amber, blue, clear, green, magenta and red) and operates on 120VAC. The Pioneer™ is ready to mount on 1/2" NPT.

5113 Battery Powered Warning Light

BPL26

Portable Warning Light

- 12VDC — uses two standard 6VDC lantern batteries
- Five dome colors
- 300-hour, 5W incandescent lamp
- NEMA 3R, IP45 enclosure



The Model BPL26 is a portable, battery powered warning light which flashes 65 times per minute. The solid state flasher features components which are moisture-proof and reverse polarity protected to ensure extended battery life and trouble-free performance.

Document

5138 Streamline™ Low Profile Light

LP2

Perfect Size Meets Superior Performance!

- Surface or panel mount
- Steady burning
- Five dome colors
- NEMA 4X, IP65 enclosure
- Built-in strain relief
- Incandescent lamp included
- Low profile – only 2.5" H x 3" diameter (65mm x 76mm)
- Available in 24VAC/VDC, 120VAC and 240VAC
- UL Listed, cUL Listed, CSA Certified, CE Compliant



The Streamline™ Model LP2 is a unique, steady burning incandescent light, ideal for both horizontal and vertical panel mount installation. This device mounts easily through any 1.54" (39mm) diameter hole; a lock nut secures the light firmly in place. A gasket positioned above the mounting surface assures a water-tight and dust-tight fit. The lamp is easily replaced from below the mounting surface. Inherent strain relief secures all wiring from the rear, for added durability. The enclosure consists of a polycarbonate dome in five colors (amber, blue, clear, green and red), and a polyamide base; the enclosure with gasket is rated NEMA 4X / IP65.

Document

5112 Electraflash® Flashing Light

141

Designed for Industrial or Vehicular Use

- Available in 12VDC, 24VDC, and 36VDC, and 120VAC
- Five dome colors
- Surface mount or integrated 1/2-inch pipe mount
- UL Listed, CSA Certified
- NEMA 3R, IP41 enclosure



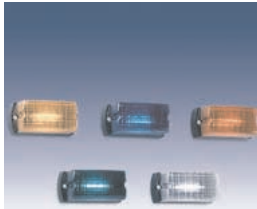
The Electraflash® Model 141 is an economical incandescent flashing light. The Electraflash® is less than six inches high and six inches in diameter. It is available in five impact-resistant fresnel dome colors: amber, blue, clear, green and red. The 120VAC model is UL (Underwriters Laboratories) listed and CSA (Canadian Standards Association) Certified.

5118 StreamLine™ Low Profile Mini Strobe

LP1

Compact, Economical Strobe Light
– Ideal for Control Panel Applications

- Easy access dome available in 5 colors
- Available in 12VDC, 24VDC, 120VAC and 240VAC
- Surface mount
- Low profile – only 2.6" (66mm) High by 2.33" (59.2mm) Wide by 5" (127mm) Long
- UL Listed, CSA Certified
- NEMA 4X, IP65 enclosure



The StreamLine™ Model LP1 low profile strobe light. This rectangular NEMA 4X strobe light is available in five colors: amber, blue, clear, green and red. The LP1 is designed to be flush mounted to control panels or other flat surfaces. Mounting is accomplished with two supplied 1-1/4", 8/32 slotted hex bolts. A polypropylene gasket is supplied to secure a water-tight and dust-tight seal. The gasket mounts between the base of the light and the mounting surface.

5139 Streamline™ Low Profile Strobe Light

LP3P, LP3S, LP3T

Perfect Size Meets Superior Performance!

- Surface mount, T-mount, or integrated 1/2-inch pipe mount
- Five dome colors
- Screw-on lens
- PLC and triac compatible
- Low profile — Model LP3S is only 5" (127mm) high
- Available in 12-48VDC, 120VAC and 240VAC
- NEMA 4X enclosure (LP3T is NEMA 3)
- UL Listed, cUL Listed, CSA Certified, CE pending



The Streamline™ Model LP3 is a low profile strobe light. This NEMA 4X strobe is available in five colors: amber, blue, clear, green and red. The LP3P contains a 1/2" pipe mount flange and is available in 12-48VDC, 120VAC and 240VAC. The LP3S provides 3-holes for easy surface mounting and is available in 12-48VDC, 120VAC and 240VAC. The LP3T features a popular 2-hole T-mount designed for wall or surface mounting, and is available in 12-48VDC, 120VAC and 240VAC.

5140 Streamline™ Low Profile Strobe Light

LP3S, LP3E, LP3M

Perfect Size Meets Superior Performance!

- Surface mount, Edison mount, or integrated 1/2 -inch pipe mount
- Five dome colors
- Screw-on lens provides easy access
- PLC and triac compatible
- Low profile — Model LP3S is only 5" (127mm) high
- Available in 12-48VDC, 120VAC and 240VAC
- NEMA 4X enclosure
- UL Listed, cUL Listed, CSA Certified, CE pending



The Streamline™ Model LP3 is a low profile strobe light. This NEMA 4X strobe is available in five colors: amber, blue, clear, green and red. The LP3S provides 3-holes for easy surface mounting and is available in 12-48VDC, 120VAC and 240VAC. The Model LP3E features a standard A-19 medium Edison screw base and is available in 12-48VDC, 120VAC and 240VAC. The model LP3M contains a 1/2" male pipe mount and is available in 12-48VDC, 120VAC or 240VAC.

5120 Visalert® Strobe Light

VALS

Strobe Warning Light

- Available in 12VDC and 24VDC, 120VAC and 240VAC
- Five lens colors
- 4,000 hour strobe tube
- Flush or surface mounts on our audible signaling devices or control panel
- NEMA 3R, IP44 enclosure
- UL Listed, CSA Certified for indoor/outdoor use



The Visalert® is a three dimensional, triangular warning light designed to be mated with the Model 350 Vibratone® horn and the Model 50GC SelecTone® speaker/ amplifier. The Model VALS can also be used as a stand alone device. Visalert is available in five lens colors: amber, blue, clear, green and red.

To learn more about B-I-A please visit us at our
WEB site: www.BiaGmbH.com



Document

5141 Streamline™ Low Profile Mini Strobe

LP6

Compact, Economical Strobe Light

- Screw-on dome available in five colors
- Available in 12-48VDC, 120VAC and 240VAC
- Surface mount
- Low profile – only 3–5/8" (92.1mm) high
- NEMA 4X, IP65 enclosure
- UL Listed, cUL Listed, CSA Certified



The Model LP6 is a very compact, high power strobe light designed for applications where space is critical. At 3–5/8" high, this strobe light is ideal for fork lift applications where head room is important. The LP6 also mounts easily to small control panels.

Document

5117 Electraflash® Strobe Warning Light

141ST

Designed for Industrial or Vehicular Use

- Available in 12VDC, 24VDC, 120VAC and 240VAC
- Four dome colors
- 4,000 hour strobe tube
- Surface mount or integrated 1/2-inch pipe mount
- NEMA 3R, IP41 enclosure
- UL Listed and CSA Certified for indoor / outdoor use



The Electraflash® 141ST is an economical strobe light designed for a variety of industrial uses. This compact warning light is less than six inches tall and six inches in diameter. Models are available in four fresnel dome colors, including amber, blue, green and red. All models are UL (Underwriter's Laboratories) Listed for indoor/outdoor use and CSA (Canadian Standards Association) Certified.

5114 Fireball® 2 Strobe Warning Light

FB2PST, FB2MST

Light Duty Strobe Light

- Available as a 12-24VDC, 120VAC and 240VAC
- Six dome colors
- 10,000 hour strobe tube
- Integrated 1/2-inch pipe mount and surface mount
- NEMA 4X, IP66 enclosure
- UL Listed, CSA Certified for indoor / outdoor use



Our brightest and most compact strobe light, the Fireball® 2 emits a powerful „Lightning Bolt“ flash of light. Approximately five inches tall and four inches in diameter and rated at 300 effective candlepower. The FB2PST is an economical solution to a wide variety of stationary and vehicular warning requirements. The FB2MST is an economical solution to a wide variety of vehicular warning applications. This strobe light operates on 12VDC and contains a magnetic mounting kit and a cigarette lighter power cord. The FB2PST is available in 12-24VDC, 120VAC and 240VAC. Available in six colors – amber, blue, clear, green, magenta, and red.

5142 Fireball® 2 Supervised Strobe Warning Light

FB24ST

Light Duty Strobe Light

- Available as a 12-24VDC, 120VAC and 240VAC
- Four wires and supervisory diode
- Six dome colors
- 10,000 hour strobe tube
- Integrated 1/2" pipe and surface mount
- NEMA 4X, IP66 enclosure
- UL Listed, CSA Certified for indoor / outdoor use



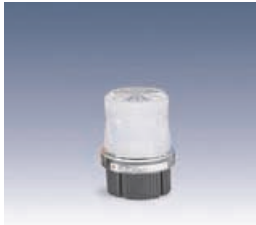
Our brightest and most compact strobe light, the Fireball® 2 Supervised Warning Light emits a powerful „lightning bolt“ flash of light. Approximately five inches tall and four inches in diameter and rated at 300 effective candlepower, the FB24ST is an economical solution to a wide variety of stationary requirements. The Fireball is available in 12-24VDC, 120VAC and 240VAC. All models are UL Listed (Underwriters Laboratories) and CSA Certified (Canadian Standards Association). Available in six colors – amber, blue, clear, green, magenta, and red.

5143 Fireball® 24-HI Strobe Warning Light

FB24STHI

Fireball® 24-HI Supervised Hearing Impaired Strobe Warning Light

- Available in 12-24VDC, 120VAC and 240VAC
- Four wires and supervisory diode
- Clear dome
- 10,000 hour strobe tube
- Integrated 1/2" pipe and surface mount
- UL Listed, CSA Certified for indoor / outdoor use
- UL1971 Listed
- NEMA 4X, IP66 enclosure



Our brightest and most compact strobe light, this Supervised Fireball® emits a powerful „lightning bolt“ flash of light. Approximately five inches tall and four inches in diameter and rated at 300 effective candlepower. The FB24STHI is available in 12-24VDC, 120VAC and 240VAC, this model is UL Listed and CSA Certified.

5115 Starfire® Strobe Warning Light

131ST, 131DST

Our Brightest Medium Duty Strobe Light

- Available in 12-24VDC, 120VAC and 240VAC
- Five dome colors
- 10,000 hour strobe tube
- Single or double flash strobe
- 1/2-inch pipe mount or optional magnetic mount
- UL Listed, cUL Listed, CSA Certified for indoor / outdoor use
- NEMA 3R, IP45 enclosure



The Starfire® strobe warning lights are available in single-flash (131ST) and double-flash (131DST) models. Through precise timing of the strobe flash, the double flash unit produces 1,200 effective candlepower; the single flash unit produces 1,000 effective candlepower.

5116 Commander® Strobe Warning Light

371ST

Heavy Duty Strobe Light

- Available in 250VDC
- Five dome colors
- Surface mount and integrated 1-inch pipe mount
- NEMA 4X, IP66 enclosure



The Commander® Model 371ST is a single-flash strobe housed in a NEMA 4X enclosure. At 60 flashes per minute and 275 peak candlepower, the Commander® is the largest strobe signal in our product line.

5144 Commander® Double Strobe Warning Light

371DST

Designed for Use in Hazardous Locations

- Available in 12-24VDC, 120VAC and 240VAC
- Five dome colors
- Surface mount and integrated 1-inch pipe mount
- NEMA 4X, IP66 enclosure
- UL Listed, cUL Listed, CSA Certified for Class I, Division 2 applications



The Commander® Model 371DST is a double-flash strobe housed in a NEMA 4X enclosure. At 80 flashes per minute and 1,000 peak candlepower, the Commander® is the largest strobe signal in our product line.

Document

5145 Battery Powered Strobe Warning Light

BPL26ST

Portable Strobe Warning Light

- 12VDC – uses two standard 6VDC lantern batteries
- 4,000 Hour strobe tube
- Five dome colors
- NEMA 3R, IP45 weatherproof enclosure
- Magnetic mount



The Model BPL26ST is a portable, battery-powered strobe warning light which flashes 65 times per minute. Components are moisture-proof and reverse polarity protected to ensure extended battery life and trouble-free performance.

5122 Electraray® Strobe Warning Light

225XST

Designed for Use in Hazardous Locations

- Available in 12-24VDC, 120VAC and 240VAC
- Six lens colors
- 10,000 hour, high-intensity strobe tube
- ½-inch pipe mount
- NEMA 4X, IP65 enclosure
- UL Listed, CSA Certified for indoor / outdoor use



The Electraray® Model 225XST hazardous location strobe light provides 80 high intensity flashes per minute. This warning light is available in 12-24VDC, 120VAC and 240VAC. Available in amber, blue, clear, green, magenta, red.

5147 Electraray® Hearing Impaired Strobe Light

224XSTHI

Electraray® Supervised Hearing Impaired Hazardous Location Strobe Warning Light

- Available in 12-24VDC, 120VAC and 240VAC
- Four wires and supervisory diodes
- Clear lens
- 10,000 hour, high-intensity strobe tube
- ½-inch pipe mount
- UL1971 Listed for Hearing Impaired
- NEMA 4X, IP65 enclosure



The Electraray® Model 224XSTHI hazardous location strobe light provides 80 high-intensity flashes per minute. This warning light is available in 12-24VDC, or 120VAC and 240VAC.

5124 Hazardous Location Warning Light

151XST

Rugged Design for Use in Hazardous Locations

- Available in 12-24VDC, 120VAC & 240VAC
- Six dome colors
- 10,000-hour high-intensity strobe
- ¾-inch pipe mount
- Dome guard included
- Marine Rated
- NEMA 4X, IP66 enclosure
- UL Listed, CSA Certified for indoor / outdoor use



The Model 151XST hazardous location strobe light provides 80 high-intensity flashes per minute. This warning light is available in 12-24VDC, 120VAC and 240VAC, 50/60Hz. Available in colors amber, blue, clear, green and red (magenta on request).

Document

5121 Electraray® Rotating Warning Light

225X

Designed for Use in Hazardous Locations

- Available in 120VAC and 240VAC
- Five dome colors
- 25-watt incandescent lamp
- ½-inch pipe mount
- UL Listed, CSA Certified for indoor / outdoor use
- NEMA 4X, IP65 enclosure



The Electraray® Model 225X is a compact, economical rotating warning light designed for a variety industrial applications. This innovative dome design, with a single screw allows quick and easy access for inspection and relamping.

5146 Electraray® Supervised Strobe Warning Light

224XST

Designed for Use in Hazardous Locations

- Available in 12-24VDC, 120VAC and 240VAC
- Four wires and supervisory diode
- Six lens colors
- 10,000 hour, high-intensity strobe tube
- ½-inch pipe mount
- NEMA 4X, IP65 enclosure
- UL Listed, CSA Certified for indoor / outdoor use



The Electraray® Model 224XST hazardous location strobe light provides 80 high intensity flashes per minute. This warning light is available in 12-24VDC, 120VAC and 240VAC. The 224XST has an effective candlepower of 240 and a 580,000 peak candlepower. The Electraray 224XST contains a supervisory diode and four wire leads for fire alarm applications. Available in amber, blue, clear, green, magenta, red.

5123 Electraray® L.E.D. Steady Burn Warning Light

225XL

L.E.D.-Based Hazardous Location Warning Light for Heavy-Duty Industrial Applications

- Available in 24VDC and 120VAC
- Five lens / lamp colors
- 100,000-hour, vibration-resistant L.E.D. lamp
- ½-inch pipe mount
- NEMA 4X, IP65 enclosure
- UL Listed, CSA Certified for Class 1, Division 2 applications



The Electraray® Model 225XL hazardous location L.E.D. light is a long-life, vibration-resistant warning light. Model 225XL is available in 24VDC and 120VAC. Available colors are amber, blue, clear, green, and red.

5125 Hazardous Location Steady-Burning Light

191X

Designed for Use in Hazardous Locations

- Available in 24 to 250 VAC or VDC
- Six tempered glass dome colors
- Uses standard A-19 incandescent lamp (40W-100W)
- ¾-inch pipe mount
- Dome Guard included
- NEMA 4X, IP66 enclosure
- UL Listed, CSA Certified for indoor / outdoor use



The Model 191X hazardous location steady burning light is rated for operation with any voltage from 24 to 250VAC or VDC and designed for hazardous locations where a visual signal is needed. below. Available – amber, blue, clear, green, red, magenta.

To learn more about B-I-A please visit us at our
WEB site: www.BiaGmbH.com



Document

5148 Steady-Burning L.E.D. Warning Light

191XL

Rugged Design for Use in Hazardous Locations

- Available in 24VDC and 120VAC
- Five tempered glass dome colors
- Two LED lamps per unit
- ¾-inch pipe mount
- Dome guard included
- UL Listed, CSA Certified
- NEMA 4X, IP66 enclosure



The Model 191XL is a steady-burning light that features LED lamps and is available in 24VDC and 120VAC operating voltages. These models are available in five colors – amber, blue, clear, green and red.

Document

5149 Fireball® 2 Strobe Warning Light

FB2PSTX

Designed for Use in Explosion-Proof Atmospheres

- Available in 12-24VDC, 120VAC and 230-240VAC
- Five lens colors
- 10,000 hour strobe tube
- Ceiling mount standard; other options available
- UL Listed, cUL Listed, Marine Listed
- EEx d IIB T5 (40°C), EEx d IIB T6 (65°C)
- NEMA 4X, IP66 enclosure



The Fireball® Model FB2PSTX explosion-proof strobe light is a compact unit that produces a „lightning bolt“ flash of light. Measuring 13.69" (348mm) high and 7.44" (189mm) in diameter, the FB2PSTX is available in 12-24VDC, 120VAC and 230-240VAC. These strobe lights are well suited for a wide range of explosion-proof warning light applications. Available in amber, blue, clear, green and red.

5126 Explosion-Proof Rotating Light

121X

Designed for Use in Explosion-Proof Atmospheres

- Available in 24VDC and 120VAC
- Five lens colors
- ¾-inch pendant mount standard; other options available
- UL Listed, CSA Certified, Marine Rated
- Dome guard optional
- NEMA 4X, IP66 enclosure



The Model 121X Series C rotating light flashes 90 times per minute and produces a 360° visual signal. This explosion-proof light has a incandescent lamp and is available in five lens colors – amber, blue, clear, green and red.. Available in five lens colors – amber, blue, clear, green, and red.

5127 Explosion-Proof Strobe Light

27XST

Designed for Use in Explosion-Proof Atmospheres

- Available in 24VDC, 120VAC & 240VAC
- Six lens colors
- 10,000 hour, strobe tube
- ¾-inch pendant mount standard
- Dome guard optional
- UL Listed, CSA Certified, Marine Rated
- NEMA 4X, IP66 enclosure



The Model 27XST explosion-proof strobe light produces 80 high-intensity flashes per minute. This warning light operates on 24VDC, 120VAC, and 240VAC 50/60Hz. Available in six colors – amber, blue, clear, green, and red (magenta upon request).

5119 Streamline™ Combination Sounder/Strobe

LP7

Low Profile Combination Sounder / Strobe
– Perfect Size Meets Superior Performance!

- Fully integrated xenon strobe circuit
- Three dome colors – Amber, Clear, Red
- Available in 18 – 30VDC
- Heavy duty ABS plastic body
- CE Compliant, UL pending
- 82–100dB @ 10' (92–110dB @ 1m)
- NEMA 4X, IP54 with shallow base, IP65 with optional deep base



Providing an audible / visual warning, the LP7 sounder / strobe combines the features of a mini sounder with a fully integrated xenon strobe circuit. The result is an attractive unit suitable for internal or external locations where a combination of high sound output and visual signal is required.

5196 Flashing Combination Audible / Visual Signal

AV1

Economical Flashing Audible / Visual Signal

- Surface mount, integrated ½-inch pipe mount, and 4-inch electrical box mount
- Five dome colors
- Twist-off lens for easy access
- Internal buzzer produces 85dB at 10' (95dB @ 1m)
- Available in 24VDC or 120VAC
- UL Listed, cUL Listed, CSA Certified
- NEMA 3R enclosure



The Model AV1 flashing combination audible / visual signal features a 100% polycarbonate housing that is rated for NEMA 3R rain-tight applications. Available dome colors include amber, blue, clear, green and red.

5197 Strobe Combination Audible / Visual Signal

AV1ST

Economical Strobe Audible / Visual Signal

- Surface mount, integrated ½-inch pipe mount, and 4-inch electrical box mount
- Five dome colors
- Twist-off lens for easy access
- Internal buzzer produces 85dB at 10' (95dB @ 1m)
- Available in 24VDC or 120VAC
- UL Listed, cUL Listed, CSA Certified
- NEMA 3R enclosure



The Model AV1ST strobe combination audible / visual signal features a 100% polycarbonate housing that is rated for NEMA 3R rain-tight applications. Available dome colors include amber, blue, clear, green and red.

5128 Rotating Audible / Visual Warning Signal

400R

Rotating Combination Audible and Visual Warning Signal in a Single Versatile Unit

- Available in 120VAC
- Five dome colors
- Wall mount
- UL Listed, CSA Certified for indoor/outdoor use
- NEMA 3R, IP43 enclosure



The Model 400R audible / visual signal combines the effective warning of a rotating light with a Model 350 horn (sold separately).

Document

5129 Strobe Audible / Visual Warning Signal**400ST**

Strobe Combination Audible and Visual Warning Signal in a Single Versatile Unit

- Available in 120VAC
- Five dome colors
- 10,000 hour strobe tube
- Wall mount
- UL Listed, CSA Certified for indoor/outdoor use
- NEMA 3R, IP43 enclosure



The Model 400ST audible / visual signal combines the effective warning of a strobe light with a [Model 350 horn](#) (sold separately). Available in five dome colors: amber, blue, clear, green and red.

Document

5198 Starfire® Strobe / Incandescent Light**131C**

Our Brightest Medium Duty Strobe... Plus a Steady-Burn Incandescent!

- Available in 24VDC and 120VAC
- Five dome colors
- Both a 10,000 hour strobe tube and a 7,000 hour incandescent
- ½-inch pipe mount
- NEMA 3R, IP45 enclosure
- Surface mount kit optional



The Starfire® Strobe / Incandescent Combination Light is a hybrid signal designed specifically for safety showers and emergency call stations. Available in amber, blue, clear, green and red.

5131 Mounting Kits**LWMB2, LCMB2**

Custom Mounting Brackets

- Heavy-duty construction
- Easy installation
- For walls and outside corners
- Indoor and outdoor use
- Replaces unsightly and hazardous makeshift supports
- ½-inch, ¾-inch and 1-inch pipe mount



The Models LWMB2 and LCMB2 mounting brackets are specifically designed for use with our stationary warning lights to provide an easy and consistent means of mounting lights throughout a facility. These brackets are suitable for any NEMA 3R application in ordinary (non Division 1 / Division 2) environments.

To learn more about B-I-A please visit us at our
WEB site: www.BiaGmbH.com

