

Light Fittings for Fluorescent Lamps

6000 Series (Zone 1)

6400 Series (Zones 2, 21 & 22)

Series 6000 and 6400 light fittings can be used for normal lighting, and also as group- or centrally-supplied emergency lights.







- As pendant or pole-mounting fittings
- With electronic ballast
- For two-pin fluorescent lamps
- 1 or 2 lamp versions: 18 W, 36 W and 58 W
- Central locking

- All-pole disconnection via N/C switch when cover is opened
- Housing in polyester resin
- Cover in polycarbonate

To learn more about B-I-A please visit us at our
WEB site: www.BiaGmbH.com



Selection table

Version	Lamp wattage W	Number of lamps	Electronic ballast	Ordering code	Weight kg
6000	18	1	1 channel ECG	6000/521-8..1-3130	4,500
Standard light fittings (Zone 1) 	18	2	2 channel ECG	6000/522-9..1	6,800
	36	1	1 channel ECG	6000/541-8..1	7,300
	36	2	2 channel ECG	6000/542-9..1	9,100
	58	1	1 channel ECG	6000/561-8..1	10,200
	58	2	2 channel ECG	6000/562-9..1	10,800
	6000	18	1	1 channel ECG	6000/821-8081-1130
Pole-mounting light fitting (Zone 1) 	18	2	2 channel ECG	6000/822-9081-1130	6,800
	36	1	1 channel ECG	6000/841-8081-1130	9,500
	36	2	2 channel ECG	6000/842-9081-1130	9,600
6400	18	1	1 channel-ECG	6400/521-8..0	4,100
Standard light fittings (Zones 2, 21 & 22) 	18	2	1 channel-ECG	6400/522-8..0	4,200
	36	1	1 channel-ECG	6400/541-8..0	6,900
	36	2	1 channel-ECG	6400/542-8..0	7,000
	58	1	1 channel-ECG	6400/561-8..0	8,700
	58	2	1 channel-ECG	6400/562-8..0	8,800
6400	18	1	1 channel-ECG	6400/821-8080-1130	6,300
Pole-mounting light fitting (Zones 2, 21 & 22) 	18	2	2 channel-ECG	6400/822-9080-1130	6,400
	36	1	1 channel-ECG	6400/841-8080-1130	9,100
	36	2	1 channel-ECG	6400/842-8080-1130	9,200

Add. to ordering code

Cabel entries	Standard	1 cable gland M 25 x 1,5 und 2 plugs M 25 x 1,5	6.00/...-.1.
	Special	Specify non-standard entries on writing	6.00/...-.9.
Through wiring	without		6.00/...-.0..
	with 3 cores		6.00/...-.3..
	with 5 cores		6.00/...-.5..

Note

The light fittings are supplied without tubes and mounting material. These must be ordered separately.

Technical Data

Version	EXLUX 6000 (Zone 1)	EXLUX 6400 (Zones 2, 21 & 22)
Explosion protection		
Gas explosion protection	⊕ II 2 G EEx ed IIC T4	⊕ II 3 G EEx nA II T4
Dust explosion protection	--	Zone 21: ⊕ II 2 D IP66 T80 °C ¹⁾ Zone 22: ⊕ II 3 D IP66 T80 °C ¹⁾ ¹⁾ T80 °C bei T _a ≤ 40 °C; T95 °C bei T _a ≤ 55 °C
Certificates		
Gas explosion protection	PTB 97 ATEX 2031	Zone 2: SNCH 03 ATEX 3517
Dust explosion protection	--	Zone 21: SNCH 03 ATEX 3516 Zone 22: SNCH 03 ATEX 3517
Marking	CE 0102	
Rated voltage	AC: 220 V - 10% ... 240 V + 10%; 50/60 Hz DC: 198 V ... 254 V	

Technical Data

Rated current	for light fittings version					
	18 W		36 W		58 W	
	1 lamp	0,1 A	0,18 A	0,18 A	0,25 A	
	2 lamp	0,18 A	0,33 A	0,33 A	0,49 A	
Power factor cos φ	cos φ ≥ 0,96 capacitive; additional compensation not required					
Ambient temperature	- 20 °C ... + 50 °C (+ 40 °C : 18 W lamps ø 38 mm → T6)					
Lamps	two-pin fluorescent lamps; ø 26 mm; socket G13					
	Standard	1 x 18 W		2 x 18 W		
	light fitting:	1 x 36 W		2 x 36 W		
		1 x 58 W		2 x 58 W		
	Pole-mounting	1 x 18 W		2 x 18 W		
	light fitting:	1 x 36 W		2 x 36 W		
Protection	IP 66 / IP 67					
Protection class	I (with internal PE connection terminal)					
Efficiency of light	broad bowl					
	18 W		36 W		58 W	
	1 lamp	2 lamp	1 lamp	2 lamp	1 lamp	2 lamp
	83 %	76 %	83 %	76 %	83 %	76 %
Material						
Enclosure	Polyester resin, glass fibre reinforced colour white, similar to RAL 9010					
Gasket	Polyurethane gasket, foamed into cover					
Cover	Polycarbonate protective paint available					
Central lock	Central locking using socket spanner M 8 / SW 13; cover hinged for access					
Light guides	Standard:	broad bowl, reflector of light fitting is painted white colour: signal white, RAL 9003 cover side is anti-glare				
	Special:	additional broad deep-bowl reflector (easily mounted) semi-polished aluminium				
Connections	Standard:	Terminal block with cover Marking: L1 + N + PE (3-pole) or L1 + L2 + L3 + N + PE (5-pole) Connection range: max. 2 x 6 mm ² (solid); 2 x 4 mm ² (flexible)				
	Special:	Spring-clamp-terminal; Connection range: max. 2 x 2,5 mm ²				
Version	EXLUX 6000 (Zone 1)			EXLUX 6400 (Zones 2, 21 & 22)		
Switch-off	of light fitting on opening power to ballast is disconnected; switching element with 2 NC contacts in positive opening operation			of faulty lamps if lamp is faulty, power supply is automatically switched off by the electronic ballast		
	of faulty lamps if lamp is faulty, power supply is automatically switched off by the electronic ballast					
Cable glands	Standard light fitting					
	Standard	1 x M 25 x 1,5 cable gland 8161 and 2 x M 25 x 1,5 plugs 8290				
	Special	1 x M 20 x 1,5 cable gland 8161 and 2 x M 20 x 1,5 plugs 8290				
		metal glands: M 20, M 25; earthing via metal adapter plates				
	Pole-mounting light fitting					
	with factory mounted pole mounting sleeve: 1 x M 32 x 1,5 cable gland 8161					

Technical Data

Through wiring

Looping through of cable

Standard fitting

There are 2 M 25 x 1,5 cable entries on the connection side for looping through of connection cable (entry and exit on one side), also possible with lights subsequently fitted with pole sleeve.

Through wiring

Standard fitting

Fittings can be supplied with internal through-wiring. Entry and exit holes for connection cables are positioned on opposite sides. A through-wiring kit can be fitted after manufacture (see accessories).
For terminal details see technical data.
Wiring cross-section 2,5 mm² for max. 16 A.

Mounting

Pendant light fitting

Standard: 2 x M 8 inserts in enclosure

Special: Mounting grooves in housing to accommodate bracket fitting and ceiling rails for variable light installation.
(variable mounting distance for fittings 18 W: 312 mm ... 465 mm; 36 W/58 W: 670 mm ... 865 mm)

A pole-mounting sleeve can also be fitted to the standard light fitting

Pole mounting fitting

On sleeve dia 42 mm secured by a clamp.

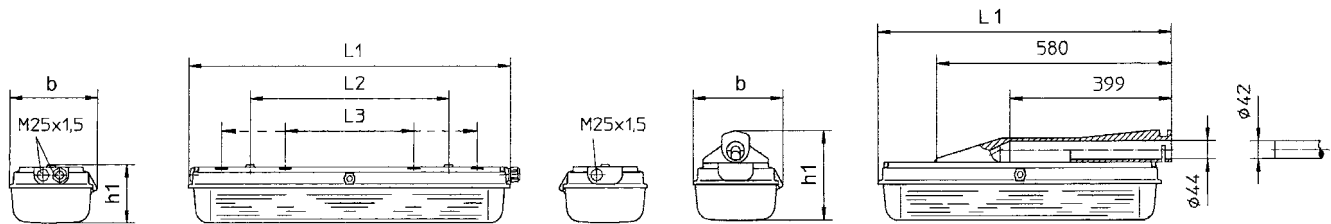
Pole-mounting sleeve normally fitted at the factory but can be retro fitted, entry as for standard fitting.

Entry of cable:

factory-mounted pole sleeve: Cable is brought into fitting through sleeve. Cable entry is sealed by a gland M 32 x 1,5.

pole sleeve is retro fitted: Entry as for standard fitting

Dimension drawings (all dimensions in mm) - subject to alterations



Dimensions in mm	Light fitting		
	18 W	36 W	58 W
L1	700	1310	1610
L2 ¹⁾	400	800	800
L3 ²⁾	312 ... 465	670 ... 865	670 ... 865
b	221	221	221
h1	143	143	143

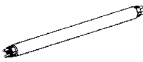
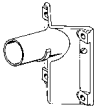

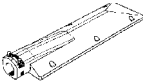
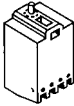
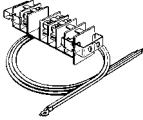


¹⁾ fixed mounting distance
²⁾ variable mounting distance

Dimensions in mm	Light fitting	
	18 W	36 W
L1	724	1334

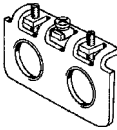
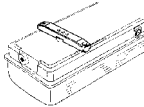
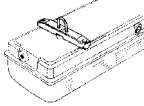

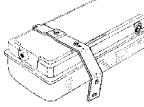
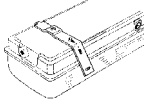
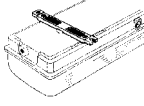
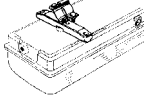
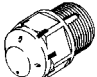
EXLUX 6000 and EXLUX 6400 Standard light fitting

EXLUX 6000 and EXLUX 6400 Pole-mounting light fitting

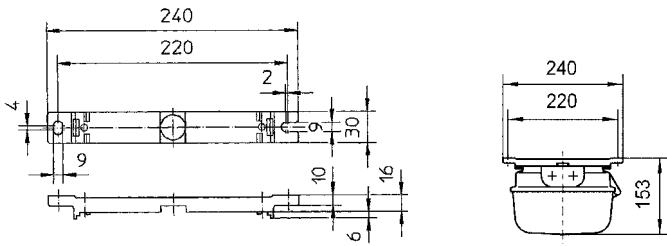
Accessories and spare parts

Designation	Illustration	Description	Ordering code	Weight kg
Fluorescent lamps		Two pin base \varnothing 26 mm Light colour: Universal white		
		18 W 1100 lm	4617220	0,100
		36 W 2600 lm	4617210	0,200
		58 W 4100 lm	4617200	0,283
Wall-mounting bracket		for pole-mounting fitting; with conduit 400 mm long, \varnothing 42 mm	4617170	2,480
Plastic cover		for light fitting 18 W	6000815050	0,000
		for light fitting 36 W	6000816050	1,600
		for light fitting 58 W	6000817050	0,000
Pole-mounting sleeve		for retro-fitting to lights 18 W and 36 W, complete with mounting accessories	6000801750	2,100
Switch		Switch element 8080/1-3-L, 2 NC	8080006600	0,025
Mounting kit for through wiring		for retro-fitting to light fittings 18 W and 36 W DV 5 with 5 core, 2,5 mm ² for max. 16 A; L1, L2, L3, N, PE		
		for light fitting 18 W	6000812870	0,400
		for light fitting 36 W	6000814870	0,400
		for light fitting 58 W	6000816870	0,400
		DV3; screw terminals 3 x 2.5 mm ² , max. 16 A L1 + N + PE		
		for light fitting 18 W	6000811870	0,200
		for light fitting 36 W	6000813870	0,250
for light fitting 58 W	6000815870	0,215		
Reflectors		for retro-fitting; broad-deep-bowl		
		for 1 lamp light fittings 18 W	6000910580	0,128
		for 1 lamp light fittings 36 W	6000911580	0,264
		for 1 lamp light fittings 58 W	6000912580	0,334
		for 2 lamp light fittings 18 W	6000907580	0,126
		for 2 lamp light fittings 36 W	6000908580	0,272
		for 2 lamp light fittings 58 W	6000909580	0,396
Socket spanner		M 8 / SW 13; to operate central locking	8198005400	0,126

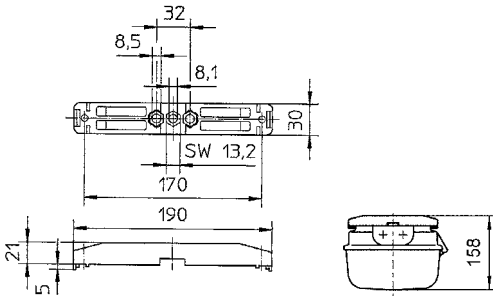
Accessories and spare parts

Designation	Illustration	Description	Ordering code	Weight kg	
Adapter plates		for use with metal cable glands which are integrated into the earthing system via the stainless steel adapter plates			
		1 x M 20 x 1.5	1 pc	6000815550	0,070
		1 x M 25 x 1.5	1 pc	6000816550	0,070
		1 x NPT 1/2"	1 pc	6000817550	0,070
		1 x NPT 3/4"	1 pc	6000818550	0,070
		2 x M 20 x 1.5	1 pc	6000819550	0,060
		2 x M 25 x 1.5	1 pc	6000820550	0,060
Mounting rail		for variable mounting distance	1 pair	6000802750	0,326
Mounting clamp		Clamp mounted to mounting rail for variable mounting distance 1 pair	6000807750	0,426	
Ring bolts		M 8, to mount directly into inserts, 1 pair	6000803900	0,100	
Wall-mounting bracket 90°		Material: stainless steel 1 pair	6000802440	1,500	
Wall-mounting bracket 50°		Material: stainless steel 1 pair	6000801440	1,000	
Ceiling clip bracket		for ceiling mounting of light fitting 1 pair	6000803750	0,280	
Pipe clamp		With mounting rail for variable fitting distance Material: stainless steel 1 pair			
		R 1 1/2"	6000801260	1,200	
		R 2"	6000802260	1,200	
		R 1 1/4"	6000803260	1,274	
Breathing gland		for ventilating and draining M 25 x 1.5	6000803960	0,010	

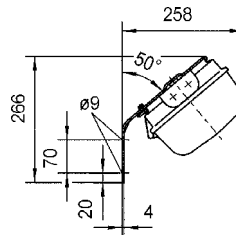
Dimension drawings for Accessories and spare parts (all dimensions in mm) - subject to alterations



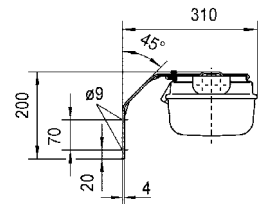
Ceiling bracket



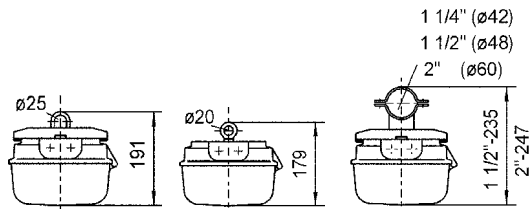
Mounting bracket



Wall-mounting bracket 50°



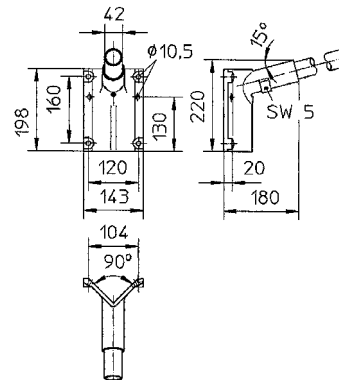
Wall-mounting bracket 90°



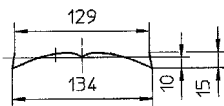
Mounting clamp fitted in mounting rail

Ring bolt M8 fitted into inserts

Pipe clamp fitted in mounting rail

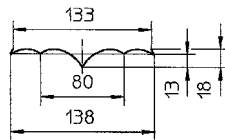


Wall-mounting bracket with conduit



for 1 lamp light fitting

Reflectors



for 2 lamp light fitting

Reflector for fitting	Length in mm
18 W	554
36 W	1164
58 W	1464