

## Sheet-Steel Emergency Light Fitting

6018 Series (Zone 1)

6418 Series (Zones 2, 21, 22)

Series 6018 and 6418 emergency light fittings in sheet-steel can be used for safety illumination, especially in spraying and painting installations as well as in clean rooms.

- Electronic ballast with integral emergency light unit
- Emergency light operating duration 1,5 h or 3 h
- Operation modes: – Maintained operation or – Maintained operation with switchable emergency light blocking
- With weekly function test
- With or without emergency light duration test (adjustable in the light fitting)



- With deep discharge protection and charging voltage limiting
- With intelligent charging technology
- For fluorescent lamps 18 W and 36 W
- Central lock
- Housing in powder-coated sheet-steel or stainless steel
- Battery enclosure is to open separately, easy battery exchange via plug contacts

To learn more about B-I-A please visit us at our  
WEB site: [www.BiaGmbH.com](http://www.BiaGmbH.com)



### Selection table

Version	Series	Lamps	Battery	Emergency light duration	Ordering code	Weight
						kg
6018 for use in Zone 1	Pendant light fitting	2 x 18 W	7 Ah	1,5 / 3 h	<b>6018/5122-90.7-6240</b>	13,600
		2 x 36 W	7 Ah	1,5 / 3 h	<b>6018/5142-9..7-6240</b>	20,000
	Wall-mounting fitting	2 x 18 W	7 Ah	1,5 / 3 h	<b>6018/6122-90.7-6240</b>	14,000
		2 x 36 W	7 Ah	1,5 / 3 h	<b>6018/6142-9..7-6240</b>	20,040
	Recessed light fitting	2 x 18 W	7 Ah	1,5 / 3 h	<b>6018/7122-90.7-6240</b>	15,300
		2 x 36 W	7 Ah	1,5 / 3 h	<b>6018/7142-9..7-6240</b>	21,900
6418 for use in Zones 2, 21 and 22	Pendant light fitting	2 x 18 W	7 Ah	1,5 / 3 h	<b>6418/5122-90.7-6240</b>	13,600
		2 x 36 W	7 Ah	1,5 / 3 h	<b>6418/5142-9..7-6240</b>	20,000
	Wall-mounting fitting	2 x 18 W	7 Ah	1,5 / 3 h	<b>6418/6122-90.7-6240</b>	14,000
		2 x 36 W	7 Ah	1,5 / 3 h	<b>6418/6142-9..7-6240</b>	20,000
	Recessed light fitting	2 x 18 W	7 Ah	1,5 / 3 h	<b>6418/7122-90.7-6240</b>	15,300
		2 x 36 W	7 Ah	1,5 / 3 h	<b>6418/7142-9..7-6240</b>	21,090

### Add. to ordering code

Through wiring Only possible for 36 W versions

Without

**6.18/....-0..**

with 4 cores

**6.18/....-4..**

with 6 cores

**6.18/....-6..**

Cable entries

Special: State with order

**6.18/....-9**

Standard (M 25 x 1,5)

**6.18/....-1**

Material

Special: Housing material stainless steel state with order

#### Note:

Maintained operation is standard on delivery. By removing a jumper and connecting an external switch this can be changed to switchable maintained operation.

The light fittings are supplied without tubes and mounting material.

These accessories must be ordered separately.

\* Wall-mounting brackets must be ordered separately.

### Technical Data

Version	6018 (Zone 1)	6418 (Zones 2, 21, 22)
Explosion protection		
Gas explosion protection	⊕ II 2G EEx edm IIC T4	⊕ II 3G EEx n A II T4 (Zone 2)
Dust explosion protection	--	⊕ II 2D IP 65 T80 °C (Zones 21 / 22)
Certificates		
for gas explosion protection	PTB 99 ATEX 2199	applied for / Supplier's Declaration
for dust explosion protection	--	applied for / Supplier's Declaration
Marking	CE 0102	
Rated voltage	AC: 220 V - 10 % ... 254 V + 6%; 50 / 60 Hz	
Back-up fuse for battery set	5 A, equipment fuse 8560/71	
Ambient temperature	Standard operation - 20 °C ... + 50 °C	
	Battery operation	- 5 °C ... + 50 °C charging
		- 20 °C ... + 50 °C discharging
Lamps	2 x 18 W; 2 x 36 W	

## Technical Data

Degree of protection	IP 65		
Class of protection	I (with internal PE connection terminal)		
Material			
Housing material	Standard	Sheet-steel, powder-coated; colour: white, similar to RAL 9016	
	Special	Stainless steel	
Lens	Safety glass		
Gasket	EPDM formed gasket		
Central lock	central locking using screw driver; glass cover hinged for access		central locking using screw driver; glass cover hinged for access
Ballast	Electronic ballast, single channel with integral emergency light electronics		
Light guides	Reflector, painted white		
Through wiring	Light fitting available with internal through wiring, 4- or 6-core (not possible for 18/20 W); cross section 2,5 mm <sup>2</sup> for max. 16 A.		
Connections	Terminal block (Line-up terminals) marking L1; L2; L3; N; PE; L <sup>1</sup> (L <sup>1</sup> = charging phase) charging phase must be connected at all time Terminal size 2 x 4 mm <sup>2</sup> , for solid cores 2 x 2,5 mm <sup>2</sup> , for flexible cores		
Switch-off	Of light fitting on opening Central locking device with safety interlock; switch 8080 with NC contacts with positive opening operation; on opening central lock, voltage to ballast, charging phase and battery set is disconnected Of faulty lamp if lamp is faulty, power supply is automatically switched off by the electronic ballast		
Cable entries	Standard	<b>Connection side:</b> 1 cable gland M25 x 1,5 and 1 plug M25 x 1,5; <b>Opposite side:</b> 1 plug M25 x 1,5	
	Special	M 20 x 1,5 in plastic or metal	
Mounting	Pendant light fitting	Light fitting top has 2 M 8 threaded rivets which allow use of different mounting parts, e. g. ring bolts.	
	Wall-mounting light fitting	Each small end is fitted with 1 M 12 threaded bolt. The light fitting is hooked-in by these bolts to the mounting brackets and secured by lock nuts. The light fittings angle of inclination is infinitely variable.	
	Recessed light fitting	Mounting frames with fixing holes are welded-on. Light fitting is inserted into ceiling cut-out and fixed via mounting frame. The frames are flush with the glass cover.	
Emergency light electronics			
Options	Emergency lighting electronics are available: In maintained operation or maintained operation with switchable emergency lighting blocking or in non maintained operation		
Interference suppression	acc. to DIN EN 55015		
Battery charging	current-regulated constant current charging; duration 20 h, than changeover to trickle charging		
Deep discharge protection	at UBatt = 1 V/cell (3 V); emergency light electronics automatically switches light off (DIN VDE 0108)		
Charging voltage limit	when a battery voltage of 1,55 V / cell (4,65 V) is reached, charging crases		
Emergency light duration	Battery capacity	Emergency light operating duration	Emergency light power
			18 W                  36 W
	7 Ah	1,5 h	90 %                  45 %
		3 h	45 %                  25 %
Changeover voltage	from mains to battery operation at $U < 0,6 \times U_N$ from battery to mains operation at $U > 0,9 \times U_N$		

## Technical Data

### Test function

Operating test	weekly test of emergency light function; battery and lamp faults are recognized an indicated via red LED
Emergency light duration test	Automatic emergency light duration test function is integrated in the light fitting. Function deactivated: By inserting jumper between terminal 9 and 12 Function activated: By removing jumper between terminal 9 and 12 When removing the jumper from the terminals 9 and 12, the test function is activated as soon as light is connected to mains and automatically repeated after time has elapsed. Testing of battery capacity at intervalls of 3 months; operating of fitting in emergency light mode for 2/3 of rated operation time. If the light fitting is switched off by discharge protection before time has elapsed, battery cannot used for emergency operation. Fault is indicated via red LED.

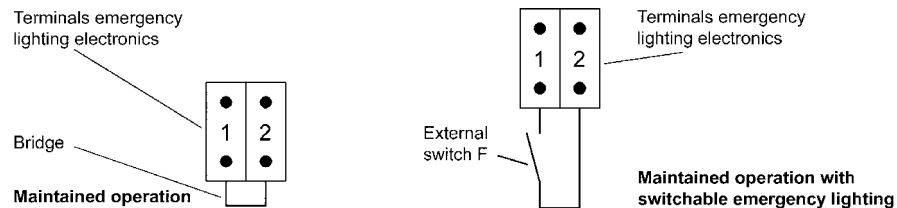
### Function indicators

1 LED red and 1 LED green, incorporated in reflector; can be seen from outside through cover

LED	Indication	Function
Green	On	Charging current flowing; everything ok
	Blinking	1:1 Emergency light duration test running
	Flashing	1:10 Automatic function test running
Red	On	Rechargeable battery capacity insufficient battery replacement necessary
	Blinking	1:1 Battery discharged; not operational
	Flashing	1:10 Battery defective

### Operation modes

On delivery light fitting is wired for maintained operation; by removing the jumper between terminals 1 and 2 and connecting external switch F, the fitting is converted to maintained operation with switchable emergency lighting.



### Functions

#### Maintained operation

On failure of supply to general lighting, fitting is supplied from the battery, irrespective of the light switch position

#### Maintained operation with switchable emergency lighting

On failure of power supply to general lighting, fitting switches to emergency lighting operation only if external switch F is closed. To switch emergency lighting centrally to „Ready“ or „Not ready“, e. g. depending on plant operation times. The external switch has a potential-free NO contact.

#### Non-maintained operation

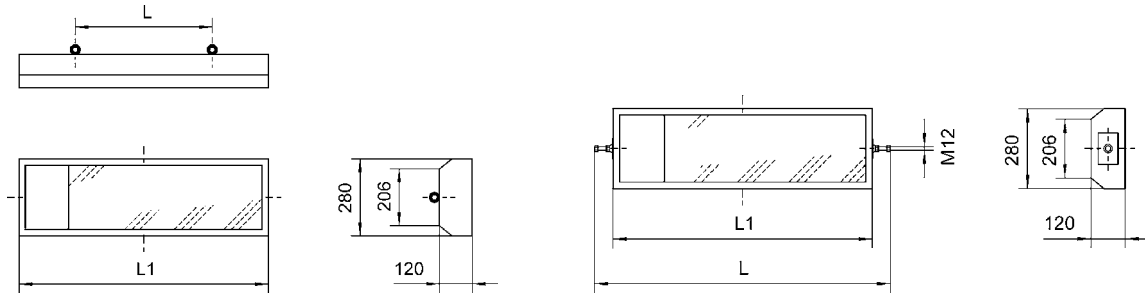
Emergency lighting is only operative when general lighting has failed; it is then supplied from the battery Connections: L<sup>1</sup>; N; PE (phase L is not connected)

### Battery set

Type	NiCd-battery, gas tight
Capacity	7 Ah
Operating voltage	6 V
Charging battery set	When central lock is opened battery set is de-energized; it can be removed from the housing by unplugging its removable contact

battery set can be removed from the housing by unplugging its removable contact

Dimension drawings (all dimensions in mm) - subject to alterations



Version      Dimensions in mm  
                  L      L1

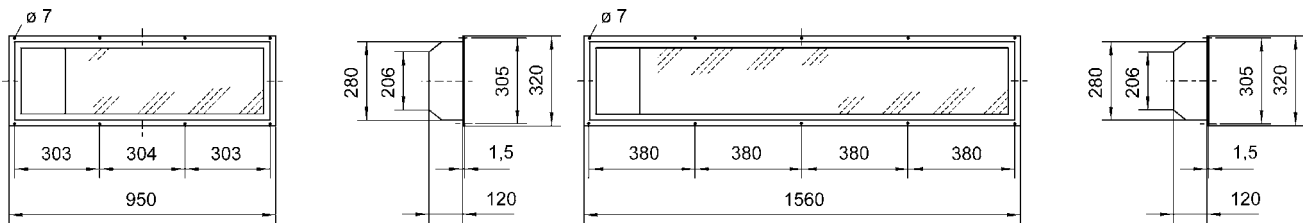
2 x 18 W	910	500
2 x 36 W	1520	950

Pendant light fitting 6018/5 and 6418/5

Version      Dimensions in mm  
                  L      L1

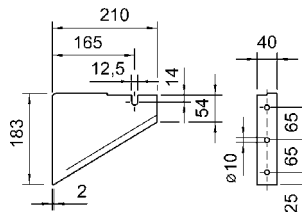
2 x 18 W	1040	910
2 x 36 W	1650	1520

Wall-mounting light fitting 6018/6 and 6418/6



Recessed light fitting 6018/7 and 6418/7  
Version 18 W

Recessed light fitting 6018/7 and 6418/7  
Version 36 W

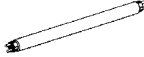
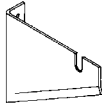

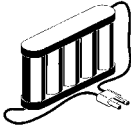
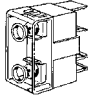
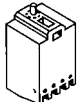


Wall mounting bracket for 6018/6 and 6418/6,  
narrow version

To learn more about B-I-A please visit us at our  
WEB site: [www.BiaGmbH.com](http://www.BiaGmbH.com)



## Accessories and spare parts

Designation	Illustration	Description	Ordering code	Weight kg
Fluorescent lamps		18 W    1100 lm	<b>4617220</b>	0,100
		36 W    2600 lm	<b>4617210</b>	0,200
		58 W    4100 lm	<b>4617200</b>	0,283
Wall-mounting bracket		Material: Sheet steel    1 pair For light fittings width: 280 mm	<b>4617180</b>	1,000
Ring bolts		M 8, to mount directly into inserts, 1 pair	<b>6000803900</b>	0,100
Battery set		NiCd-battery    7 Ah / 6 V    1 pc	<b>6044805740</b>	1,150
Fuse		to protect battery circuit; 6,3 A; 1 pc	<b>8560019010</b>	0,050
Switch		Switch element 8082/1-2-00, 1 NO	<b>8082002010</b>	0,025
		Switch element 8080/1-3-L, 2 NC	<b>8080006600</b>	0,025

We reserve the right to make alterations to the technical data, weights, dimensions, designs and products available without notice. The illustrations cannot be considered binding.

To learn more about B-I-A please visit us at our  
WEB site: [www.BiaGmbH.com](http://www.BiaGmbH.com)

