

Compact Sheet-Steel Light Fittings



6114 Series (Zones 1)
6514 Series (Zones 2, 21, 22)

The 6114 and 6514 series compact light fittings can be used for normal lighting, but also as information fittings or as group or centrally-powered emergency lights.

- For fluorescent lamps 8 W
- With electronic ballasts
- As 1-, 2- oder 3-lamp version
- Versions
 - Pendant fitting
 - Wall-mounting fitting
 - Flush mounted fitting
- Powder-coated steel or stainless steel
- Can be fitted to order with emergency exit signs
- Central lock
- All pole disconnection via NC switch in positive opening operation when glass cover is opened (6114 series)

To learn more about B-I-A please visit us at our
WEB site: www.BiaGmbH.com



Selection table

Version	Lamps		Electronic ballasts	Ordering code	Weight kg
6114 Pendant light fitting (Zone 1)	1 x 8 W	fluorescent lamps	1	6114/5081-80.1-...	6,230
	2 x 8 W	fluorescent lamps	1	6114/5082-80.1-...	6,330
	3 x 8 W	fluorescent lamps	1	6114/5083-80.1-...	6,430
6114 Wall-mounting light fitting (Zone 1)*	1 x 8 W	fluorescent lamps	1	6114/6081-80.1-...	6,630
	2 x 8 W	fluorescent lamps	1	6114/6082-80.1-...	6,730
	3 x 8 W	fluorescent lamps	1	6114/6083-80.1-...	6,830
6114 Recessed light fitting (Zone 1)	1 x 8 W	fluorescent lamps	1	6114/7081-80.1-...	6,870
	2 x 8 W	fluorescent lamps	1	6114/7082-80.1-...	6,970
	3 x 8 W	fluorescent lamps	1	6114/7083-80.1-...	7,070

Add. to ordering code

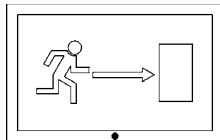
Cable entries Standard:
1 x cable gland M25 x 1,5
1 x plug M25 x 1,5 **6114/.....9-...**

Special:
Specify non-standard entries in writing **6114/.....1-...**

Emergency exit signs Needed only when used as information lights or
escape sign lights;
with adhesive symbols positioned as follows:

Mounting position

Standard



A

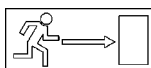
Special Please state other positions in writing

Please specify emergency exit sign number

Symbols complying with VBG 125, DIN 4844, DIN 5035;
recognition distance e: 45 m; size: 395 x 235 mm

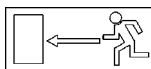
Illustration

Description



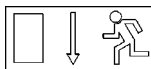
Colour Sign Background white
green

6114/.....-17



Colour Sign Background white
green

6114/.....-19



Colour Sign Background white
green

6114/.....-30

Notes:

Compact light fittings can be operated as emergency lighting via a group or central battery system.
The light fittings are supplied without lamps and mounting material. These must be ordered separately.
Further escape and information signs available on request.

* Wall-mounting brackets must be ordered separately.

Selection table

Version	Lamps	Electronic ballasts	Ordering code	Weight kg	
6514 Pendant light fitting (Zones 2, 21, 22)	1 x 8 W	Fluorescent lamps	1	6514/5081-80.0-...	6,230
	2 x 8 W	Fluorescent lamps	1	6514/5082-80.0-...	6,330
	3 x 8 W	Fluorescent lamps	1	6514/5083-80.0-...	6,430
	1 x 24 W	DULUX L lamps	1	6514/5241-80.0-...	5,820
	1 x 60 W	Incandescent lamp		6514/5601-00.0-...	5,980
	2 x 40 W	Incandescent lamp		6514/5402-00.0-...	6,130
6514 Wall-mounting lightfitting (Zones 2, 21, 22)	1 x 8 W	Fluorescent lamps	1	6514/6081-80.0-...	6,630
	2 x 8 W	Fluorescent lamps	1	6514/6082-80.0-...	6,730
	3 x 8 W	Fluorescent lamps	1	6514/6083-80.0-...	6,830
	1 x 24 W	DULUX L lamps	1	6514/6241-80.0-...	6,220
	1 x 60 W	Incandescent lamp		6514/6601-00.0-...	6,380
	2 x 40 W	Incandescent lamp		6514/6402-00.0-...	6,530
6514 Recessed light fitting (Zones 2, 21, 22)	1 x 8 W	Fluorescent lamps	1	6514/7081-80.0-...	6,870
	2 x 8 W	Fluorescent lamps	1	6514/7082-80.0-...	6,970
	3 x 8 W	Fluorescent lamps	1	6514/7083-80.0-...	7,070
	1 x 24 W	DULUX L lamps	1	6514/7241-80.0-...	6,460
	1 x 60 W	Incandescent lamp		6514/7601-00.0-...	6,620
	2 x 40 W	Incandescent lamp		6514/7402-00.0-...	6,770

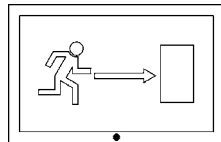
Add. to ordering code

Cable glands	Standard: 1 x cable gland M25 x 1,5 2 x plug M25 x 1,5	6514/.....1....
	Special: Specify non-standard entries in writing	6514/.....9....

Emergency exit sign Needed only when used as information lights or escape sign lights; with adhesive symbols positioned as follows:

Mounting position

Standard



A

Special Please state other positions in writing

Please specify emergency exit sign number

Symbols complying with VBG 125, DIN 4844, DIN 5035; recognition distance e: 45 m; size: 395 x 235 mm

Illustration	Description	Colour	Sign Background	Ordering code
	Sign Background	white	green	6514/.....-17
	Sign Background	white	green	6514/.....-30
	Sign Background	white	green	6514/.....-19

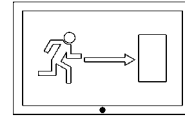
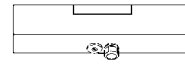
Notes:

Compact light fittings can be operated as emergency lighting via a group or central battery system. The light fittings are supplied without lamps and mounting material. These must be ordered separately. Further escape and information signs available on request.
* Wall-mounting brackets must be ordered separately.

Technical Data

Cable entries

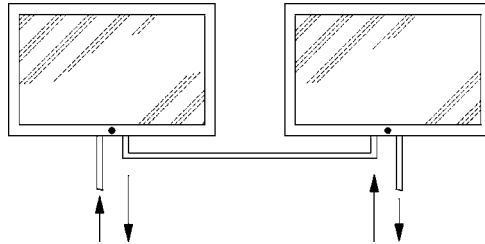
Standard: 1 cable gland 8161 in plastic M25 x 1,5 and 1 plug 8290 in plastic, M25 x 1,5



Special: other cable entries in plastic or metal on request

Looping through of cables

There are 3 free terminals assembled in the light fitting for looping through of cables



Mounting

Pendant light fitting

Light fitting top has 2 M 8 threaded rivets which allow use of different mounting parts, e. g. ring bolts.

Wall-mounting light fitting

Each small end is fitted with 1 M 12 threaded bolt. The light fitting is hooked-in by these bolts to the mounting brackets and secured by lock nuts. The light fittings angle of inclination is infinitely variable.

Recessed light fitting

Mounting frames with fixing holes are welded-on. Light fitting is inserted into ceiling cut out and fixed via mounting frame. The frames are flush with the glass cover.

Emergency exit signs

Use

for information lights or escape route lighting

Material

Foil, self-adhesive, printed with various pictograms in different colours

Mounting

Foil, stuck to the cover externally

Options

Available emergency exit signs are detailed in selection table

Recognition distance

e = 45 m

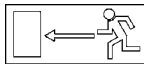
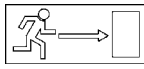
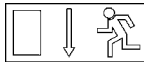
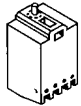
Dimensions

395 mm x 235 mm

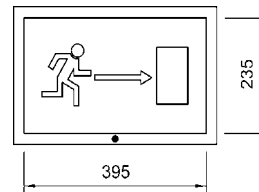
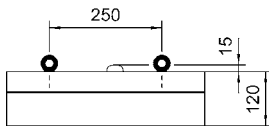
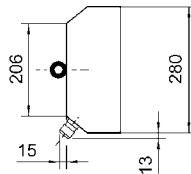
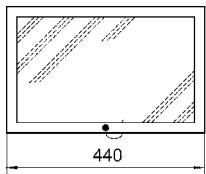
Accessories and spare parts

Designation	Illustration	Description	Ordering code	Weight		
Fluorescent lamps		Colour of light	6100801210	kg 0,300		
		Light flux				
Wall-mounting bracket		Material:	Sheet steel	1 pair	4617180	1,000
		For light fittings width:	280 mm			
		M 8, to mount directly into inserts, 1 pair	6000803900	0,100		

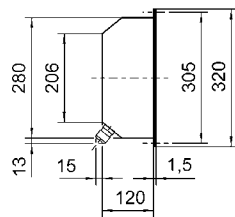
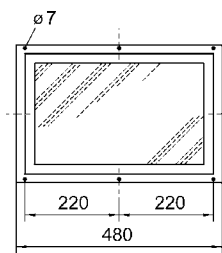
Accessories and spare parts

Designation	Illustration	Description	Ordering code	Weight kg
Emergency exit sign		Adhesive foil, to stick on the glass cover Size: 395 x 235 mm Recognition distance: e = 45 m		
		Colours Sign white Background green	1 pc. 5206190	0,010
		Colours Sign white Background green	1 pc. 5206170	0,010
		Colours Sign white Background green	1 pc. 5206300	0,010
Switch		Switch element 8080/1-3-L, 2 NC	8080006600	0,025

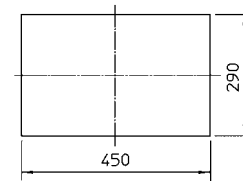
Dimension drawings (all dimensions in mm) - subject to alterations



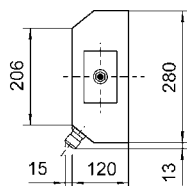
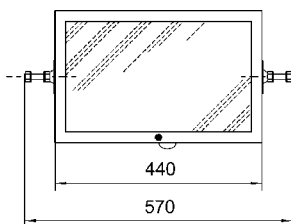
Pendant light fitting



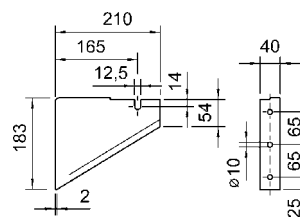
Emergency exit sign



Recessed tight fitting



Mounting cut out



Wall-mounting light fitting

Compact sheet-steel light fitting 6114 and 6514

Wall-mounting bracket