

Support Products

PVC coated pipe straps are used to securely mount conduit to a wall or other structure for support. They are available in two styles: a one-hole malleable iron strap or a two-hole stamped steel strap. Mounting hardware not provided.

PVC coated clamp back spacers are used with malleable or stamped pipe straps to provide a mounting stand-off for a conduit from a wall or other structure.

FEATURES

- 20 mil gray PVC exterior coating
- 10 trade sizes from 1/2" through 4".



CONDUIT PIPE STRAP 1 HOLE

| Pipe Size | FERROUS Catalog # | Nominal Wt. For 100 |
|-----------|-------------------|---------------------|
| 1/2" | 14-50G | 11 |
| 3/4" | 14-75G | 14 |
| 1" | 14-100G | 12 |
| 1-1/4" | 14-125G | 25 |
| 1-1/2" | 14-150G | 36 |
| 2" | 14-200G | 71 |
| 2-1/2" | 14-250G | 111 |
| 3" | 14-300G | 134 |
| 3-1/2" | 14-350G | 166 |
| 4" | 14-400G | 256 |

CONDUIT PIPE STRAP 2 HOLE

| Pipe Size | FERROUS Catalog # | Nominal Wt. For 100 |
|-----------|-------------------|---------------------|
| 1/2" | HS-901 | 2.0 |
| 3/4" | HS-902 | 3.0 |
| 1" | HS-903 | 4.0 |
| 1-1/4" | HS-904 | 4.5 |
| 1-1/2" | HS-905 | 5.0 |
| 2" | HS-906 | 10.0 |
| 2-1/2" | HS-907 | 13.0 |
| 3" | HS-908 | 17.0 |
| 3-1/2" | HS-909 | 20.0 |
| 4" | HS-910 | 25.0 |

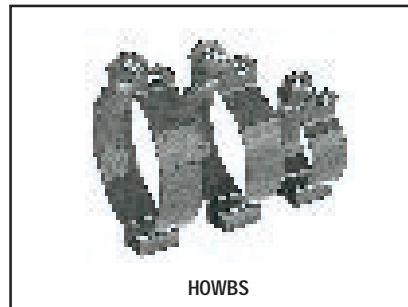
CONDUIT CLAMP BACK SPACER

| Pipe Size | FERROUS Catalog # | Nominal Wt. Each |
|-----------|-------------------|------------------|
| 1/2" | 141-G | 0.1 |
| 3/4" | 142-G | 0.1 |
| 1" | 143-G | 0.1 |
| 1-1/4" | 144-G | 0.2 |
| 1-1/2" | 145-G | 0.2 |
| 2" | 146-G | 0.3 |
| 2-1/2" | 147-G | 1.0 |
| 3" | 148-G | 1.7 |
| 4" | 149-G | 2.0 |
| 5" | 150-G | - |

PVC coated conduit clamp hangers are used with threaded rod to securely suspend conduit runs supported from above. They are provided with stainless steel hardware.

FEATURES

- 20 mil gray PVC exterior coating
- 10 trade sizes from 1/2" through 4".



CONDUIT HANGER

| Pipe Size | Catalog # | Nominal Weight |
|-----------|-----------|----------------|
| 1/2" | H0WBS | 0.1 |
| 3/4" | H1WBS | 0.1 |
| 1" | H2WBS | 0.1 |
| 1-1/4" | H3WBS | 0.1 |
| 1-1/2" | H4WBS | 0.2 |
| 2" | H5WBS | 0.3 |
| 2-1/2" | H6WBS | 0.4 |
| 3" | H7WBS | 0.5 |
| 3-1/2" | H8WBS | 0.6 |
| 4" | H9WBS | 0.7 |

PVC coated all thread rod is used with coated conduit hangers and coated strut to securely suspend conduit runs supported from above. It is provided in 3/8" and 1/2" sizes and three standard length, 3', 6' and 10'.

FEATURES

- 20 mil gray PVC exterior coating
- 2 trade sizes and 3 standard lengths



THREAD RODS

| Size | Catalog # |
|------------|-------------|
| 3/8" X 3' | ATR-375X36 |
| 3/8" X 6' | ATR-375X72 |
| 3/8" X 10' | ATR-375X120 |
| 1/2" X 3' | ATR-050X36 |
| 1/2" X 6' | ATR-050X72 |
| 1/2" X 10' | ATR-050X120 |

Support Products

PVC coated pipe straps are used with coated strut to support conduit installations in a variety of configurations. B2008 style straps may be used in either vertical or horizontal positions to support conduit. Straps provided with stainless steel hardware. Conduit spacing may be as close together as allowed by the couplings. B3690 style straps may be used with hanger rods or other means of support to securely fasten conduit runs.

FEATURES

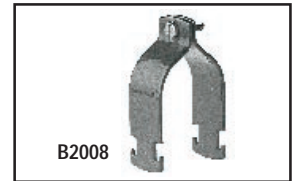
- 20 mil gray PVC exterior coating
- Available in 11 trade sizes.

PVC COATED PIPE STRAPS

| Size | FERROUS Catalog # | Gauge Metal | Weight For 100 pcs | Standard Pack |
|--------|-------------------|-------------|--------------------|---------------|
| 1/2" | B3690-1/2 | | 18 | 25 |
| 3/4" | B3690-3/4 | | 21 | 25 |
| 1" | B3690-1 | | 22 | 25 |
| 1-1/4" | B3690-1-1/4 | | 25 | 25 |
| 1-1/2" | B3690-1-1/2 | | 27 | 25 |
| 2" | B3690-2 | | 29 | 25 |
| 2-1/2" | B3690-2-1/2 | | 64 | 25 |
| 3" | B3690-3 | | 72 | 25 |
| 3-1/2" | B3690-3-1/2 | | 84 | 25 |
| 4" | B3690-4 | | 138 | 10 |
| 5" | B3690-5 | | 162 | 10 |

PVC COATED PIPE STRAPS

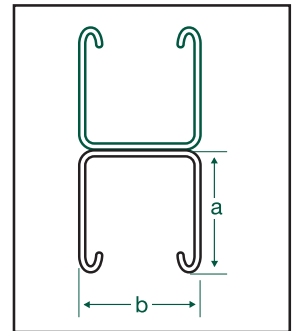
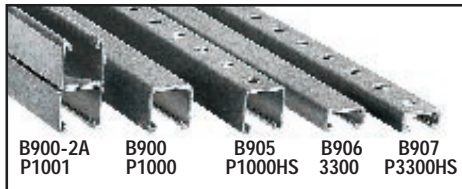
| Size | FERROUS Catalog # | Gauge Metal | Weight For 100 pcs | Standard Pack |
|--------|-------------------|-------------|--------------------|---------------|
| 1/2" | B2008 | 14 | 13.0 | 100 |
| 3/4" | B2009 | 14 | 15.0 | 100 |
| 1" | B2010 | 14 | 17.0 | 100 |
| 1-1/4" | B2011 | 12 | 19.5 | 100 |
| 1-1/2" | B2012 | 12 | 28.0 | 100 |
| 2" | B2013 | 12 | 31.0 | 50 |
| 2-1/2" | B2013 | 12 | 36.0 | 50 |
| 3" | B2015 | 12 | 42.0 | 50 |
| 3-1/2" | B2016 | 11 | 56.0 | 25 |
| 4" | B2017 | 11 | 64.0 | 25 |
| 5" | B2019 | 10 | 76.0 | 25 |



PVC coated strut is a versatile system of structural elements that can be used to build supports for a variety of applications. When combined with coated conduit hangers and other accessories, coated strut is a versatile and economical way to provide reliable support for conduit runs and other electrical and mechanical installations.

FEATURES

- 20 mil gray PVC exterior coating
- 2 trade sizes and 3 standard styles



PVC COATED STRUT

| Style | FERROUS Catalog # | Nominal Wt. Per 100 ft. | X | Y | Strut Thickness |
|----------------------|-------------------|-------------------------|------|------|-----------------|
| Channel | B900-10 | 178.0 | 1.54 | 1.54 | 12 ga. |
| Channel Back to Back | B9002A-10 | 360.0 | 1.54 | 3.04 | 12 ga. |
| Channel Drilled | B905-10 | 172.0 | 1.54 | 1.54 | 12 ga. |
| Channel Shallow | B906-10 | 91.0 | 1.54 | 0.79 | 14 ga. |
| Channel Drilled | B907-10 | 85.0 | 1.54 | 0.79 | 14 ga. |

PVC COATED STRUT

| Style | FERROUS Catalog # | Nominal Wt. Per 100 ft. | X | Y | Strut Thickness |
|----------------------|-------------------|-------------------------|------|------|-----------------|
| Channel | P1000-10 | 200.0 | 1.67 | 1.67 | 12 ga. |
| Channel Drilled | P1000HS-10 | 185.0 | 1.67 | 1.67 | 12 ga. |
| Channel Back to Back | P1001-10 | 380.0 | 1.67 | 3.29 | 12 ga. |
| Channel Shallow | P3300-10 | 135.0 | 1.67 | 0.92 | 12 ga. |
| Channel Drilled | P3300HS-10 | 130.0 | 1.67 | 0.92 | 12 ga. |

PVC coated strut nuts are used to assemble strut components and to secure coated all thread rod in a section of strut. These are available with or without a spring to aid in placement and assembly.

FEATURES

- 20 mil gray PVC exterior coating
- 10 trade sizes from 1/2" through 4".



COATED STRUT NUT

| Pipe Size | FERROUS Catalog # |
|-----------|-------------------|
| 3/8" | N228-WO |
| 1/2" | N225-WO |
| 3/8" | N228 |
| 1/2" | N225 |
| 3/8" | N2500-375 |
| 1/2" | N2500-050 |

Support Products

PVC coated beam clamps are used to securely support conduit runs by attaching them to beams, angles, trusses and other structural members. They are available in four different styles:

Right Angle – to attach the conduit run at a 90° angle to a beam or structural member.

Parallel – to attach the conduit run parallel to a beam or structural member.

Edge – to attach the conduit run at a 90° angle to a thin beam or structural member.

Hanger Rod Beam Clamp – to attach a single all thread rod to a beam or structural member.

FEATURES

- 40 mil gray PVC exterior coating on right angle clamps.
- 20 mil gray PVC exterior coating on parallel and edge clamps.
- Right angle clamps supplied with plastic encapsulated screws.
- All clamps specifically sized to fit PVC coated conduit.
- Right angle and parallel clamps available in 10 trade sizes 1/2" through 4".
- Edge clamps available in 3 trade sizes 1/2" through 1".
- Hanger rod beam clamps available with 5 different jaw openings 15/16" through 2 1/8"

COATED NUTS

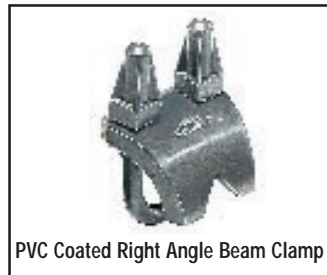
| FERROUS CATALOG # | Description |
|-------------------|----------------------------------|
| NUT KIT 1 | 5/16 ENC NUTS-RA,UBLT 1/2 -1 1/4 |
| NUT KIT 2 | 3/8 ENC NUTS - RA,UBLT 1 1/2-6 |



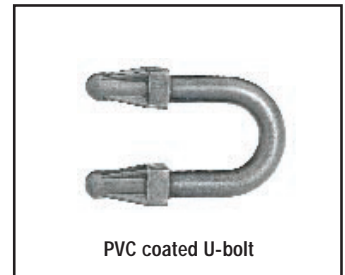
Parallel Beam Clamp



Edge Beam Clamp



PVC Coated Right Angle Beam Clamp



PVC coated U-bolt

PARALLEL CONDUIT CLAMP

| Pipe Size | FERROUS Catalog # | Nominal Weight |
|-----------|-------------------|----------------|
| 1/2" | UPC-50 | 46.8 |
| 3/4" | UPC-75 | 63.0 |
| 1" | UPC-100 | 67.0 |
| 1-1/4" | UPC-125 | 100.0 |
| 1-1/2" | UPC-150 | 130.0 |
| 2" | UPC-200 | 158.0 |
| 2-1/2" | UPC-250 | 175.0 |
| 3" | UPC-300 | 200.0 |
| 3-1/2" | UPC-350 | 250.0 |
| 4" | UPC-400 | 275.0 |

EDGE STYLE CONDUIT CLAMP

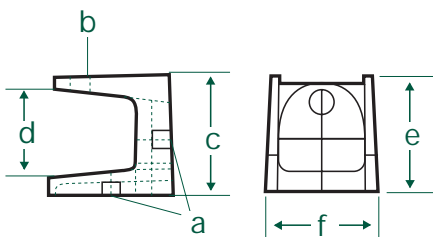
| Pipe Size | FERROUS Catalog # | Nominal Weight |
|-----------|-------------------|----------------|
| 1/2" | UEC-50 | 74.0 |
| 3/4" | UEC-75 | 90.0 |
| 1" | UEC-100 | 100.0 |

RIGHT ANGLE CONDUIT CLAMP

| Pipe Size | w/PVC U-Bolt Cat # | w/SS U-Bolt Cat # | Nominal Weight |
|-----------|--------------------|-------------------|----------------|
| 1/2" | RA-50 | UBC-50 | 49.0 |
| 3/4" | RA-75 | UBC-75 | 53.0 |
| 1" | RA-100 | UBC-100 | 61.0 |
| 1-1/4" | RA-125 | UBC-125 | 65.0 |
| 1-1/2" | RA-150 | UBC-150 | 92.0 |
| 2" | RA-200 | UBC-200 | 100.0 |
| 2-1/2" | RA-250 | UBC-250 | 125.0 |
| 3" | RA-300 | UBC-300 | 150.0 |
| 3-1/2" | RA-350 | UBC-350 | 175.0 |
| 4" | RA-400 | UBC-400 | 198.0 |

CONDUIT U-BOLT

| Pipe Size | Stainless Steel Cat # | PVC Coated Cat # | Nominal Weight |
|-----------|-----------------------|------------------|----------------|
| 1/2" | U-050 | U-050-PVC | 49.0 |
| 3/4" | U-075 | U-075-PVC | 53.0 |
| 1" | U-100 | U-100-PVC | 61.0 |
| 1-1/4" | U-125 | U-125-PVC | 65.0 |
| 1-1/2" | U-150 | U-150-PVC | 92.0 |
| 2" | U-200 | U-200-PVC | 100.0 |
| 2-1/2" | U-250 | U-250-PVC | 125.0 |
| 3" | U-300 | U-300-PVC | 150.0 |
| 3-1/2" | U-350 | U-350-PVC | 175.0 |
| 4" | U-400 | U-400-PVC | 198.0 |
| 5" | U-500 | U-500-PVC | 100.0 |
| 6" | U-600 | U-600-PVC | 130.0 |



BEAM CLAMPS

| Pipe Size | FERROUS Catalog # | A | B | C | D | E | F | Nominal Weight | Maximum Load |
|-----------|-------------------|---------|------------|--------|-----|-------|-------|----------------|--------------|
| 1" | IS-500 | 1/4-20 | 5/16-1-1/8 | 1-3/8 | 7/8 | 1-1/4 | 1-1/8 | 25 | 500 |
| 1-1/4" | IS-501 | 5/16-18 | 3/8-16 | 1-3/4 | 7/8 | 1-5/8 | 1-1/2 | 50 | 800 |
| 1-1/2" | IS-502 | 3/8-16 | 1/2-13 | 2-1/16 | 7/8 | 2 | 2 | 90 | 2000 |
| 2" | IS-503 | 1/2-13 | 1/2-13 | 2-5/8 | 1 | 1-1/4 | 1-1/8 | 195 | 2000 |
| 2-1/2" | IS-508 | 1/2-13 | 1/2-13 | 2-1/4 | 7/8 | 2-1/2 | 2-5/8 | 25 | 4000 |